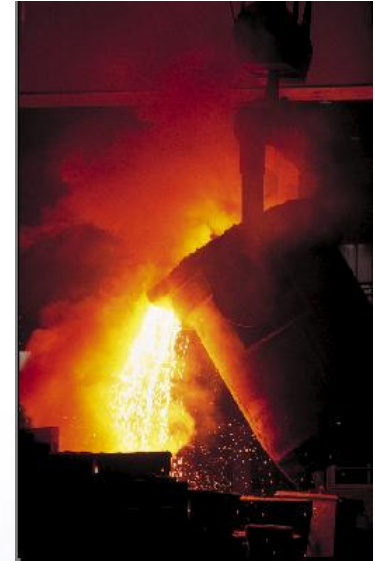


BÖHLER UDDEHOLM



BÖHLER-UDDEHOLM special steels

For the world's top performers

BÖHLER UDDEHOLM COMPANY



Special Steels in Romania

Böhler-Uddeholm Romania is part of the concern Böhler-Uddeholm AG. The company was founded in 2002 with the purpose of getting Böhler and Uddeholm closer to Romanian market and more precisely to tools and mould producers by offering them high quality materials where and when they need them.

Although we activate for short time on this market we are one of the most important tool steels, high-speed steels and special materials suppliers in Romania and we have in present commercial relations with more than 600 Romanian companies from varied industries.

PLACEMENT



Our products describe us. All the stages of fabrication from raw material to delivery, passing through fusion, transformation and machining are concentrated in the way that guaranties our clients the highest level of quality and reliability.

We are partners with a large amount of great names of industry branches like:

- ✚ The car industry
- ✚ The automotive industry
- ✚ The plastic mould industry
- ✚ The forge industry
- ✚ The cutting and extrusion industry
- ✚ The aircraft and motor industry
- ✚ The construction of power plants
- ✚ The engineering of transforming
- ✚ The consumer goods and electronics industry
- ✚ The wood and saw industry
- ✚ The textile and paper industry
- ✚ Others

PRODUCTION SITE



Our production site is placed close to Bucharest belt road, having with that good links with all country localities and an excellent access for all types of vehicles. In the same time, our position permits a good access from Bucharest too witch is very close.

To deliver a wide variety of steel grades as sawn blocs or fix length bars, Bohler-Uddeholm Romania owns the follow high productivity steel cutting machines:

- Vertical cutting machine, brand KASTObloc U5, with maximum cutting capacity of 590 x 2100 mm, used for cutting of mould steels blocs.
- Horizontal automate cutting machine, brand DANOBAT CP650 A, with a maximum cutting capacity 650 x 650 mm.
- Horizontal automate cutting machine, brand DANOBAT CP 440 A with a maximum cutting capacity 440 x 440 mm.
- Saw band BAUER and METORA with maximum capacity of cutting 380 x 380 mm.
- Horizontal cutting machine, brand KASTO with maximum cutting capacity of 800 x 1050 mm.

We can also provide grinding and milling services.

The heat treatment is coming.

BÖHLER UDDEHOLM



BÖHLER-UDDEHOLM

ROMANIA SRL

Atomistilor Street,96-102, Magurele, Ilfov district, Romania

Phone: +4021-405.58.40

+4021-405.58.41

Fax: +4021-405.58.48

E-mail: office@bohler.ro

office@uddeholm.ro

www.bohler.ro